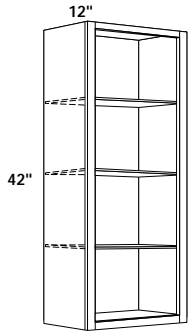


# 42" HIGH WALL CABINETS



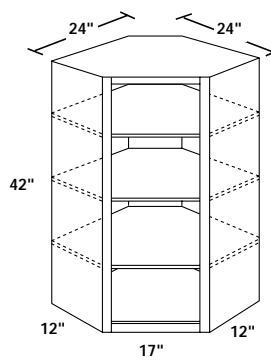
## 42" HIGH SINGLE DOOR WALL CABINETS

W942 L or R  
W1242 L or R  
W1542 L or R  
W1842 L or R  
W2142 L or R  
\*W2442 L or R

Specify L or R Door Hinge

\*Bel Air and Coronet have two butt doors.

**NOTE:** W942 L or R is shipped with a square panel-in-frame door when ordered in Hampton Arch.

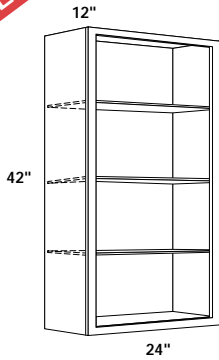


## 42" HIGH SINGLE DOOR CORNER WALL CABINET

CW2442 L or R

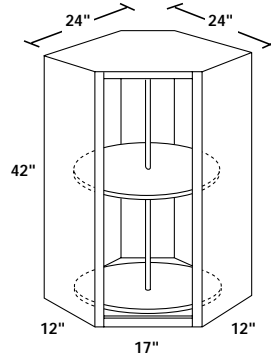
Specify L or R Door Hinge

**NEW**



## 42" HIGH BUTT DOOR WALL CABINET

W2442BD

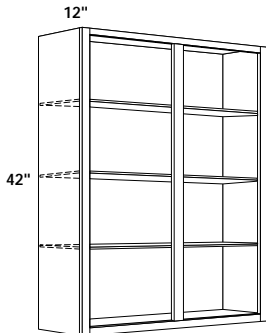


## 42" HIGH SINGLE DOOR CORNER WALL CABINET WITH LAZY SUSAN

CWS2442 L or R

Specify L or R Door Hinge

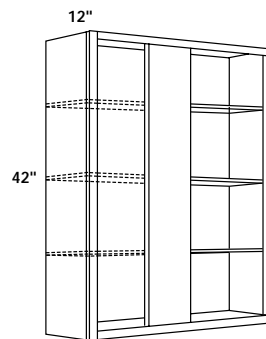
Lazy Susan shelf diameter is 18".



## 42" HIGH DOUBLE DOOR WALL CABINETS

W2742  
W3042  
W3342  
W3642  
W3942  
W4242  
W4542  
\*W4842

\*Bel Air and Coronet have four butt doors.



## 42" HIGH SINGLE DOOR BLIND WALL CABINETS

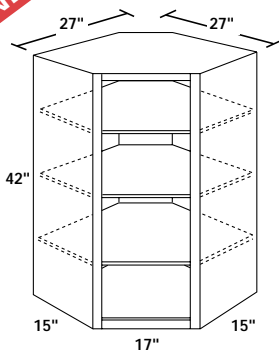
BLW24/2742 L or R  
BLW27/3042 L or R  
BLW30/3342 L or R  
BLW33/3642 L or R  
\*BLW36/3942 L or R

Specify L or R Blind  
(See page 14 for blind cabinet installation instructions)

**NOTE:** When ordering in Full Overlay Styles: order OBLW42

\*Bel Air and Coronet have two butt doors.

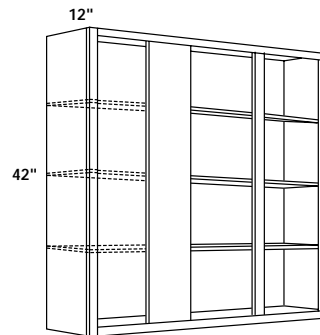
**NEW**



## 42" HIGH X 15" DEEP SINGLE DOOR CORNER WALL CABINET

CW2742 L or R

Specify L or R Door Hinge



## 42" HIGH DOUBLE DOOR BLIND WALL CABINETS

BLW39/4242 L or R  
BLW42/4542 L or R  
BLW45/4842 L or R  
BLW48/5142 L or R

Specify L or R Blind  
(See page 14 for blind cabinet installation instructions)

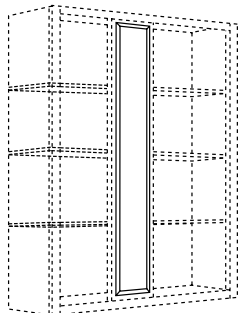
**NOTE:** When ordering in Full Overlay Styles: order OBLW42

**BLIND CABINETS:** Filler must be used. Filler sold separately. Allow 15" to turn corner. Cabinets may be pulled up to 4".

**SHELVES:** All wall cabinets have adjustable shelves unless specified otherwise.

**HINGES:** All 42" High Wall Cabinet doors have 3 hinges per door.

# 42" HIGH WALL CABINETS



## 42" HIGH BLIND WALL CABINET FILLER OVERLAY

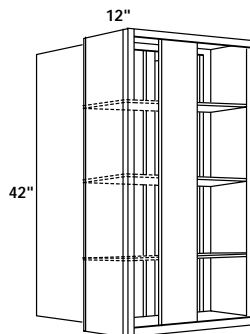
OBLW42

Filler overlay shipped loose for field installation on Blind Wall Cabinet.

1/8" Reveal Full Overlay  
5-3/4" w x 41-1/2" h

1/4" Reveal Full Overlay  
5-1/2" w x 41" h

**NOTE:** For Full Overlay Door Styles Only.



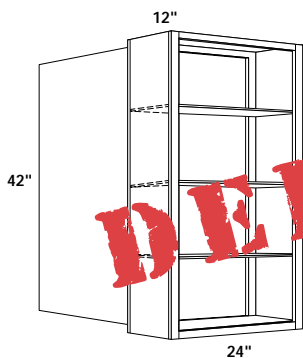
## 42" HIGH SINGLE DOOR BLIND PENINSULA CORNER WALL CABINET

BLPW27/3042 L or R

Specify L or R Blind  
(See page 14 for blind cabinet installation instructions)

**NOTE:** Single Door Front Double Door Rear

**NOTE:** When ordering in Full Overlay Styles: order OBLW42

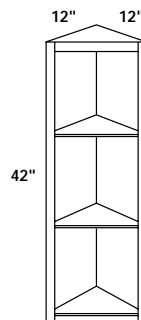


## 42" HIGH SINGLE DOOR PENINSULA WALL CABINET

PW2442

**NOTE:** Single Door Front Double Door Rear

**NOTE:** Bel Air and Coronet have two butt doors front, and two butt doors rear.

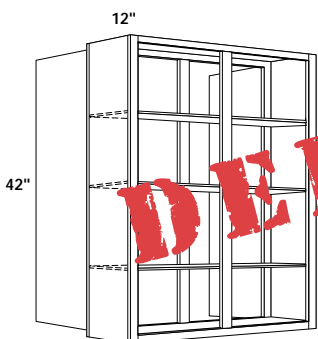


## 42" HIGH SINGLE DOOR WALL END CABINET

WEC1242 L or R

Specify L or R Door Hinge  
(Fixed shelves)

End panels are not finished.



## 42" HIGH DOUBLE DOOR PENINSULA WALL CABINETS

PW2042  
PW3042

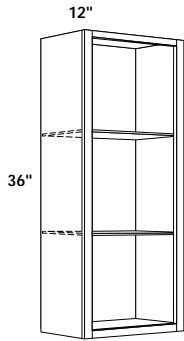
**NOTE:** Double Door Front and Rear

**BLIND CABINETS:** Filler must be used. Filler sold separately. Allow 15" to turn corner. Cabinets may be pulled up to 4".

**SHELVES:** All wall cabinets have adjustable shelves unless specified otherwise.

**HINGES:** All 42" High Wall Cabinet doors have 3 hinges per door.

# 36" HIGH WALL CABINETS



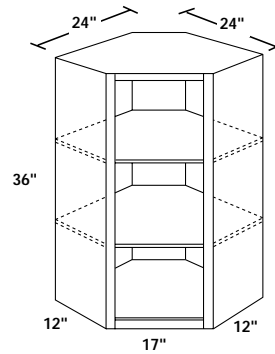
## 36" HIGH SINGLE DOOR WALL CABINETS

W936 L or R  
W1236 L or R  
W1536 L or R  
W1836 L or R  
W2136 L or R  
\*W2436 L or R

Specify L or R Door Hinge

\*Bel Air has two butt doors.

**NOTE:** W936 L or R is shipped with a square panel-in-frame door when ordered in Hampton Arch.

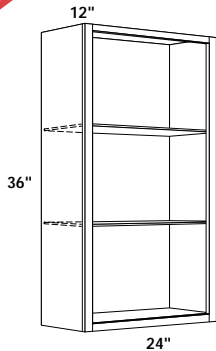


## 36" HIGH SINGLE DOOR CORNER WALL CABINET

CW2436 L or R

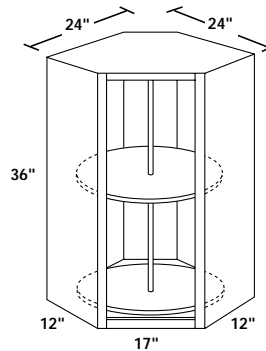
Specify L or R Door Hinge

**NEW**



## 36" HIGH BUTT DOOR WALL CABINET

W2436BD

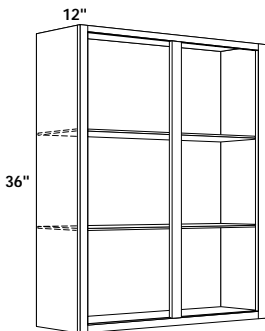


## 36" HIGH SINGLE DOOR CORNER WALL CABINET WITH LAZY SUSAN

CWS2436 L or R

Specify L or R Door Hinge

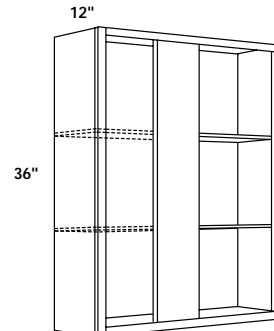
Lazy Susan shelf diameter is 18".



## 36" HIGH DOUBLE DOOR WALL CABINETS

W2736  
W3036  
W3336  
W3636  
W3936  
W4236  
W4536  
\*W4836

\*Bel Air has four butt doors.



## 36" HIGH SINGLE DOOR BLIND WALL CABINETS

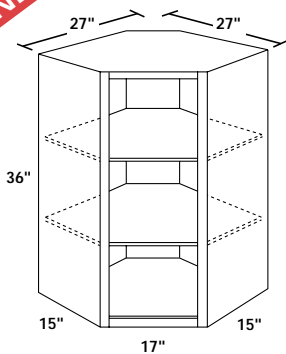
BLW24/2736 L or R  
BLW27/3036 L or R  
BLW30/3336 L or R  
BLW33/3636 L or R  
\*BLW36/3936 L or R

Specify L or R Blind  
(See page 14 for blind cabinet installation instructions)

**NOTE:** When ordering in Full Overlay Styles: order OBLW36

\*Bel Air has two butt doors.

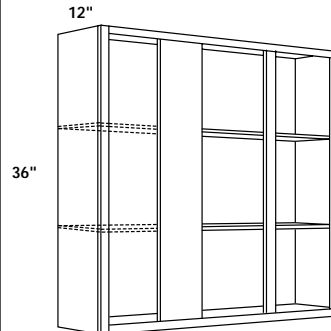
**NEW**



## 36" HIGH X 15" DEEP SINGLE DOOR CORNER WALL CABINET

CW2736 L or R

Specify L or R Door Hinge



## 36" HIGH DOUBLE DOOR BLIND WALL CABINETS

BLW39/4236 L or R  
BLW42/4536 L or R  
BLW45/4836 L or R  
BLW48/5136 L or R

Specify L or R Blind  
(See page 14 for blind cabinet installation instructions)

**NOTE:** When ordering in Full Overlay Styles: order OBLW36

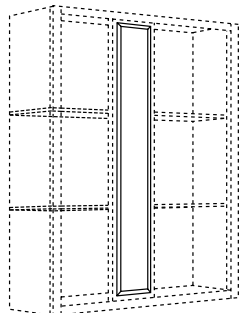
**BLIND CABINETS:** Filler must be used. Filler sold separately. Allow 15" to turn corner. Cabinets may be pulled up to 4".

**SHELVES:** All wall cabinets have adjustable shelves unless specified otherwise.

**HINGES:** All 36" High Wall Cabinet doors have 2 hinges per door.

**Note for all 36" Wall Cabinets:** Available in Bel Air, Coronet, Hampton, Hampton Arch, LaCerise, LaCerise Arch, Olympus, Olympus Arch, Quadric, Rutledge, Siena, Summit Hill, Tiara, Tiara Arch, Tuscan, Waverly and Waverly Arch only.

# 36" HIGH WALL CABINETS



## 36" HIGH BLIND WALL CABINET FILLER OVERLAY

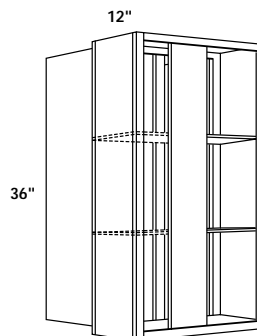
OBLW36

Filler overlay shipped loose for field installation on Blind Wall Cabinet.

1/8" Reveal Full Overlay  
5-3/4" w x 35-1/2" h

1/4" Reveal Full Overlay  
5-1/2" w x 35" h

**NOTE:** For Full Overlay Door Styles Only.



## 36" HIGH SINGLE DOOR BLIND PENINSULA CORNER WALL CABINET

BLPW27/3036 L or R

Specify L or R Blind  
(See page 14 for blind cabinet installation instructions)

**NOTE:** Single Door Front  
Double Door Rear

**NOTE:** When ordering in Full Overlay Styles: order OBLW36

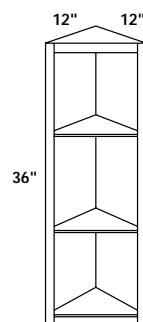


## 36" HIGH SINGLE DOOR PENINSULA WALL CABINET

PW2436

**NOTE:** Single Door Front  
Double Door Rear

**NOTE:** Bel Air and Coronet have two butt doors front, and two butt doors rear.

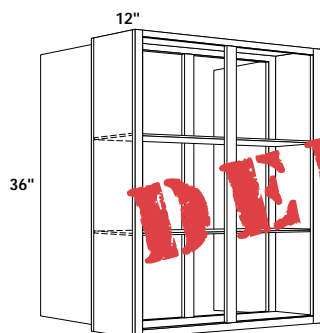


## 36" HIGH SINGLE DOOR WALL END CABINET

WEC1236 L or R

Specify L or R Door Hinge  
(Fixed shelves)

End panels are not finished.



## 36" HIGH DOUBLE DOOR PENINSULA WALL CABINETS

PW3036  
PW3636

**NOTE:** Double Door Front and Rear

**BLIND CABINETS:** Filler must be used. Filler sold separately. Allow 15" to turn corner. Cabinets may be pulled up to 4".

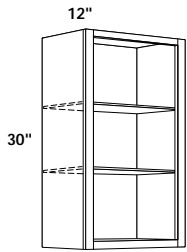
**SHELVES:** All wall cabinets have adjustable shelves unless specified otherwise.

**HINGES:** All 36" High Wall Cabinet doors have 2 hinges per door.

**Note for all 36" Wall Cabinets:** Available in Bel Air, Coronet, Hampton, Hampton Arch, LaCerise, LaCerise Arch, Olympus, Olympus Arch, Quadric, Rutledge, Siena, Summit Hill, Tiara, Tiara Arch, Tuscany, Waverly and Waverly Arch only.

# 30" HIGH WALL CABINETS

## 30" HIGH SINGLE DOOR WALL CABINETS



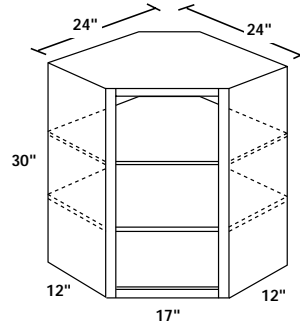
W930 L or R  
W1230 L or R  
W1530 L or R  
W1830 L or R  
W2130 L or R  
\*W2430 L or R

Specify L or R Door Hinge

**NOTE:** W930 L or R is shipped with a square panel-in-frame door when ordered in Hampton Arch.

\*Bel Air and Coronet have two butt doors.

## 30" HIGH SINGLE DOOR CORNER WALL CABINET



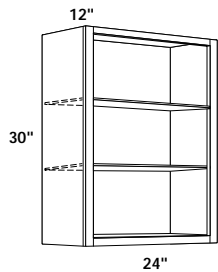
CW2430 L or R

Specify L or R Door Hinge

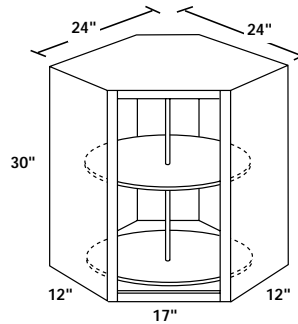
**NEW**

## 30" HIGH BUTT DOOR WALL CABINET

W2430BD



## 30" HIGH SINGLE DOOR CORNER WALL CABINET WITH LAZY SUSAN

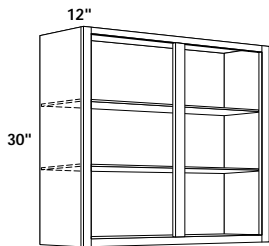


CWS2430 L or R

Specify L or R Door Hinge

Lazy Susan shelf diameter is 18".

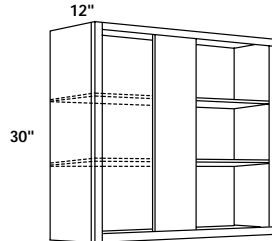
## 30" HIGH DOUBLE DOOR WALL CABINETS



W2730  
W3030  
W3330  
W3630  
W3930  
W4230  
W4530  
\*W4830

\*Bel Air and Coronet have four butt doors.

## 30" HIGH SINGLE DOOR BLIND WALL CABINETS



BLW24/2730 L or R  
BLW27/3030 L or R  
BLW30/3330 L or R  
BLW33/3630 L or R  
\*BLW36/3930 L or R

Specify L or R Blind  
(See page 14 for blind cabinet installation instructions)

**NOTE:** When ordering in Full Overlay Styles: order OBLW30

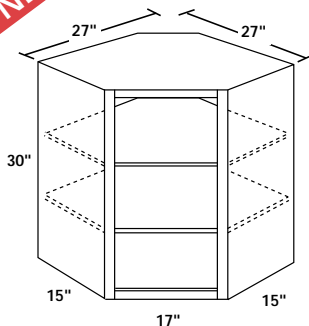
\*Bel Air and Coronet have two butt doors.

**NEW**

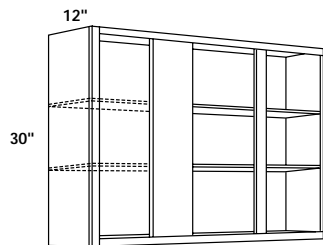
## 30" HIGH X 15" DEEP SINGLE DOOR CORNER WALL CABINET

CW2730 L or R

Specify L or R Door Hinge



## 30" HIGH DOUBLE DOOR BLIND WALL CABINETS



BLW39/4230 L or R  
BLW42/4530 L or R  
BLW45/4830 L or R  
BLW48/5130 L or R

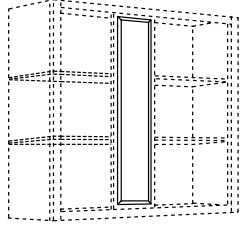
Specify L or R Blind  
(See page 14 for blind cabinet installation instructions)

**NOTE:** When ordering in Full Overlay Styles: order OBLW30

**BLIND CABINETS:** Filler must be used. Filler sold separately. Allow 15" to turn corner. Cabinets may be pulled up to 4".

**SHELVES:** All wall cabinets have adjustable shelves unless specified otherwise.

# 30" HIGH WALL CABINETS



## 30" HIGH BLIND WALL CABINET FILLER OVERLAY

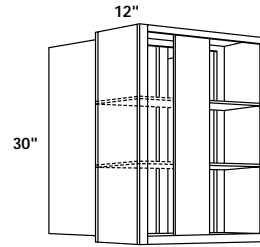
OBLW30

Filler overlay shipped loose for field installation on Blind Wall Cabinet.

1/8" Reveal Full Overlay  
5-3/4" w x 29-1/2" h

1/4" Reveal Full Overlay  
5-1/2" w x 29" h

**NOTE:** For Full Overlay Door Styles Only.



## 30" HIGH SINGLE DOOR BLIND PENINSULA CORNER WALL CABINET

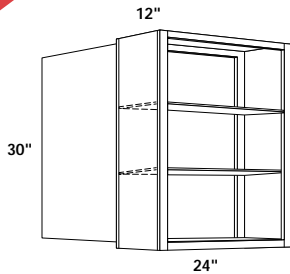
BLPW27/3030 L or R

Specify L or R Blind  
(See page 14 for blind cabinet installation instructions)

**NOTE:** Single Door Front  
Double Door Rear

**NOTE:** When ordering in Full Overlay Styles: order OBLW30

**NEW**

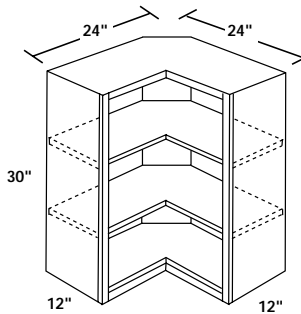


## 30" HIGH SINGLE DOOR PENINSULA WALL CABINET

PW1830 L or R  
PW2130 L or R  
PW2430 L or R

**NOTE:** Single Door Front & Rear

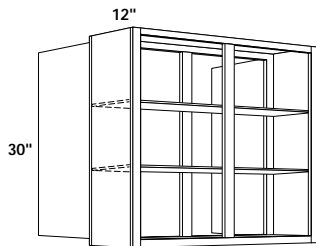
**NOTE:** Bel Air and Coronet have two butt doors front, and two butt doors rear.



## 30" HIGH SINGLE DOOR SQUARE CORNER WALL CABINET

WSQC2430 L or R

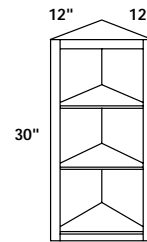
Specify L or R Door Hinge



## 30" HIGH DOUBLE DOOR PENINSULA WALL CABINETS

PW3030  
PW3630

**NOTE:** Double Door Front & Rear



## 30" HIGH SINGLE DOOR WALL END CABINET

WEC1230 L or R

Specify L or R Door Hinge  
(Fixed shelves)

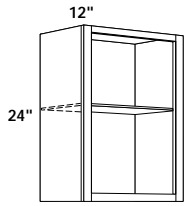
End panels are not finished.

**BLIND CABINETS:** Filler must be used. Filler sold separately. Allow 15" to turn corner. Cabinets may be pulled up to 4".

**SHELVES:** All wall cabinets have adjustable shelves unless specified otherwise.

# 24" HIGH WALL CABINETS

## 24" HIGH SINGLE DOOR WALL CABINET

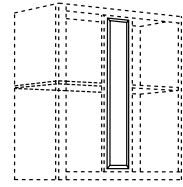


W1224 L or R  
W1524 L or R  
W1824 L or R  
W2124 L or R  
\*W2424 L or R

Specify L or R Door Hinge

\*Bel Air and Coronet have two butt doors.

## 24" HIGH BLIND WALL CABINET FILLER OVERLAY



OBLW24

Filler overlay shipped loose for field installation on Blind Wall Cabinet.

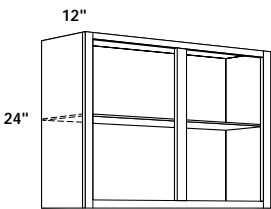
1/8" Reveal Full Overlay  
5-3/4" w x 23-1/2" h

1/4" Reveal Full Overlay  
5-1/2" w x 23" h

**NOTE:** For Full Overlay Door Styles Only.

**NEW**

## 24" HIGH DOUBLE DOOR WALL CABINETS

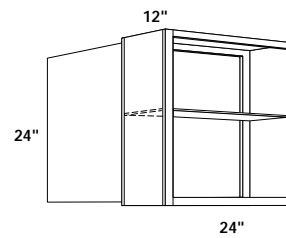


W2724  
W3024  
W3324  
W3624  
W3924  
W4224  
W4524  
\*W4824

\*Bel Air and Coronet have four butt doors.

**NEW**

## 24" HIGH SINGLE DOOR PENINSULA WALL CABINETS

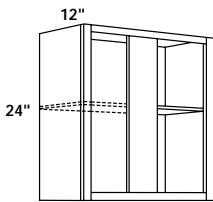


PW1824 L or R  
PW2124 L or R  
PW2424 L or R

**NOTE:** Single Door Front & Rear

**NOTE:** Bel Air and Coronet have two butt doors front, and two butt doors rear.

## 24" HIGH SINGLE DOOR BLIND WALL CABINET

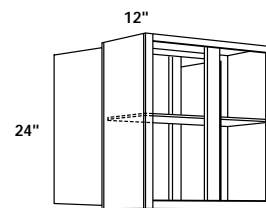


BLW24/2724 L or R

Specify L or R Blind  
(See page 14 for blind cabinet installation instructions)

**NOTE:** When ordering in Full Overlay Styles: order OBLW24

## 24" HIGH DOUBLE DOOR PENINSULA WALL CABINETS



PW3024  
PW3624

**NOTE:** Double Door Front & Rear

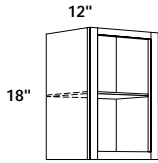
**BLIND CABINETS:** Filler must be used. Filler sold separately. Allow 15" to turn corner. Cabinets may be pulled up to 4".

**SHELVES:** All wall cabinets have adjustable shelves unless specified otherwise.

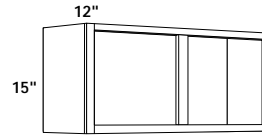
## 18" HIGH WALL CABINETS

## 15" &amp; 12" HIGH WALL CABINETS

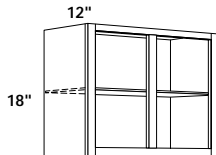
NEW

18" HIGH SINGLE DOOR  
WALL CABINETSW1818 L or R  
W2118 L or R

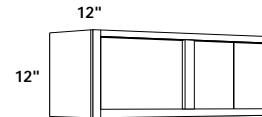
Specify L or R Door Hinge

15" HIGH DOUBLE  
DOOR WALL CABINETSW3015  
W3315  
W3615  
W3915

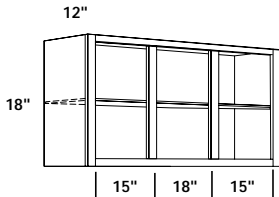
NEW

18" HIGH DOUBLE  
DOOR WALL CABINETSW2418  
W2718  
W3018  
W3318  
W3618  
W3918  
W4218

NEW

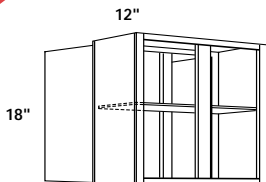
12" HIGH DOUBLE  
DOOR WALL CABINETSW3012  
W3312  
W3612  
W3912

NEW

18" HIGH TRIPLE DOOR  
WALL CABINET

W4818

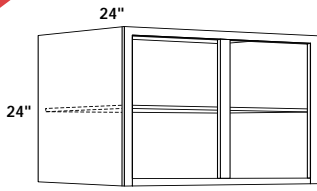
NEW

18" HIGH DOUBLE  
DOOR PENINSULA  
WALL CABINETSPW3018  
PW3618NOTE: Double Door  
Front & Rear

# REFRIGERATOR CABINETS

# WALL DECORATIVE ENDS

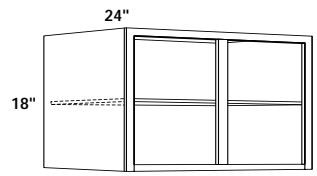
**NEW**



**★24" HIGH X 24" DEEP DOUBLE DOOR REFRIGERATOR CABINETS**

- W3024x24
- W3324x24
- W3624x24
- W3924x24
- W4224x24

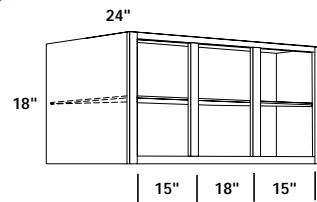
**NEW**



**★18" HIGH X 24" DEEP DOUBLE DOOR REFRIGERATOR CABINETS**

- W3018x24
- W3318x24
- W3618x24
- W3918x24
- W4218x24

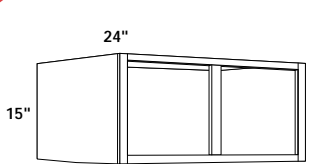
**NEW**



**★18" HIGH X 24" DEEP TRIPLE DOOR REFRIGERATOR CABINET**

- W4818x24

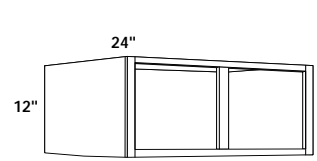
**NEW**



**★15" HIGH X 24" DEEP DOUBLE DOOR REFRIGERATOR CABINETS**

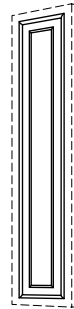
- W3015x24
- W3315x24
- W3615x24
- W3915x24

**NEW**



**★12" HIGH X 24" DEEP DOUBLE DOOR REFRIGERATOR CABINETS**

- W3012x24
- W3312x24
- W3612x24
- W3912x24



**WALL CABINET DECORATIVE ENDS**

	Door Size Chart		
	Standard Reveal	1/4" Reveal Full Overlay	1/8" Reveal Full Overlay
WDE42	10" x 39-5/8"	11-1/2" x 41"	11-3/4" x 41-1/2"
*WDE36	10" x 33-5/8"	11-1/2" x 35"	11-3/4" x 35-1/2"
WDE30	10" x 27-5/8"	11-1/2" x 29"	11-3/4" x 29-1/2"
WDE24	10" x 21-5/8"	11-1/2" x 23"	11-3/4" x 23-1/2"

Shipped Loose for Field Installation

**NOTE: Installs onto exposed face of Wall Cabinet End Panels.**

★ All Refrigerator Cabinets must be installed between walls and /or cabinetry of equal or greater depth.

\*WDE36 available in Bel Air, Coronet, Hampton, Hampton Arch, LaCerise, LaCerise Arch, Olympus, Olympus Arch, Quadric, Rutledge, Siena, Summit Hill, Tiara, Tiara Arch, Tuscany, Waverly and Waverly Arch only.

# MULLION DOOR CHARTS

# MULLION DOOR CABINETS

## STANDARD REVEAL DOOR STYLES

DOOR	DOOR SIZE	GLASS SIZE	DOOR STYLE
MD1524	13" x 21-5/8"	9-3/8" x 18"	Branford Hampton Hampton Arch Siena Tuscany
MD1824	16" x 21-5/8"	12-3/8" x 18"	
MD1530	13" x 27-5/8"	9-3/8" x 24"	
MD1830	16" x 27-5/8"	12-3/8" x 24"	
MD2130	19" x 27-5/8"	15-3/8" x 24"	
MDC2430	14-1/2" x 27-5/8"	10-7/8" x 24"	
*MD1536	13" x 33-5/8"	9-3/8" x 30"	
*MD1836	16" x 33-5/8"	12-3/8" x 30"	
*MD2136	19" x 33-5/8"	15-3/8" x 30"	
*MDC2436	14-1/2" x 33-5/8"	10-7/8" x 30"	
MD1542	13" x 39-5/8"	9-3/8" x 36"	
MD1842	16" x 39-5/8"	12-3/8" x 36"	
MD2142	19" x 39-5/8"	15-3/8" x 36"	
MDC2442	14-1/2" x 39-5/8"	10-7/8" x 36"	

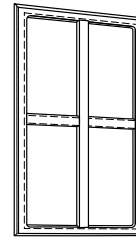
## 1/8" REVEAL - FULL OVERLAY DOOR STYLES

DOOR	DOOR SIZE	GLASS SIZE	DOOR STYLE
MD1524	14-3/4" x 23-1/2"	12-1/16" x 20-5/16"	Quadric Tiara Tiara Arch Waverly Waverly Arch
MD1824	17-3/4" x 23-1/2"	15-1/16" x 20-5/16"	
MD1530	14-3/4" x 29-1/2"	12-1/16" x 26-5/16"	
MD1830	17-3/4" x 29-1/2"	15-1/16" x 26-5/16"	
MD2130	20-3/4" x 29-1/2"	18-1/16" x 26-5/16"	
MDC2430	15-1/2" x 29-1/2"	12-13/16" x 26-5/16"	
*MD1536	14-3/4" x 35-1/2"	12-1/16" x 32-5/16"	
*MD1836	17-3/4" x 35-1/2"	15-1/16" x 32-5/16"	
*MD2136	20-3/4" x 35-1/2"	18-1/16" x 32-5/16"	
*MDC2436	15-1/2" x 35-1/2"	12-13/16" x 32-5/16"	
MD1542	14-3/4" x 41-1/2"	12-1/16" x 38-5/16"	
MD1842	17-3/4" x 41-1/2"	15-1/16" x 38-5/16"	
MD2142	20-3/4" x 41-1/2"	18-1/16" x 38-5/16"	
MDC2442	15-1/2" x 41-1/2"	12-13/16" x 38-5/16"	

## 1/4" REVEAL - FULL OVERLAY DOOR STYLES

DOOR	DOOR SIZE	GLASS SIZE	DOOR STYLE
MD1524	14-1/2" x 23"	10-11/16" x 19-1/4"	Bel Air Olympus Olympus Arch LaCerise LaCerise Arch Summit Hill
MD1824	17-1/2" x 23"	13-11/16" x 19-1/4"	
MD1530	14-1/2" x 29"	10-11/16" x 25-1/4"	
MD1830	17-1/2" x 29"	13-11/16" x 25-1/4"	
MD2130	20-1/2" x 29"	16-11/16" x 25-1/4"	
MDC2430	15-1/2" x 29"	11-11/16" x 25-1/4"	
*MD1536	14-1/2" x 35"	10-11/16" x 31-1/4"	
*MD1836	17-1/2" x 35"	13-11/16" x 31-1/4"	
*MD2136	20-1/2" x 35"	16-11/16" x 31-1/4"	
*MDC2436	15-1/2" x 35"	11-11/16" x 31-1/4"	
MD1542	14-1/2" x 41"	10-11/16" x 37-1/4"	Rutledge
MD1842	17-1/2" x 41"	13-11/16" x 37-1/4"	
MD2142	20-1/2" x 41"	16-11/16" x 37-1/4"	
MDC2442	15-1/2" x 41"	11-11/16" x 37-1/4"	
MD1524	17-1/2" x 23"	11-1/16" x 19-13/16"	
MD1824	14-1/2" x 23"	14-1/16" x 19-13/16"	
MD1530	14-1/2" x 29"	11-1/16" x 25-13/16"	
MD1830	17-1/2" x 29"	14-1/16" x 25-13/16"	
MD2130	20-1/2" x 29"	17-1/16" x 25-13/16"	
MDC2430	15-1/2" x 29"	12-1/16" x 25-13/16"	
*MD1536	14-1/2" x 35"	11-1/16" x 31-13/16"	
*MD1836	17-1/2" x 35"	14-1/16" x 31-13/16"	
*MD2136	20-1/2" x 35"	17-1/16" x 31-13/16"	
*MDC2436	15-1/2" x 35"	12-1/16" x 31-13/16"	
MD1542	14-1/2" x 41"	11-1/16" x 37-13/16"	
MD1842	17-1/2" x 41"	14-1/16" x 37-13/16"	
MD2142	20-1/2" x 41"	17-1/16" x 37-13/16"	
MDC2442	15-1/2" x 41"	12-1/16" x 37-13/16"	

**NEW**

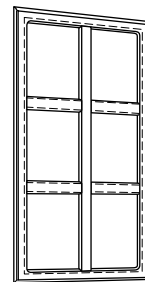


Glass Not Included.

### MULLION DOORS (24" HIGH)

- MD1524 - (Fits W1524, W3024)
- MD1824 - (Fits W1824, W3624)

**NEW**

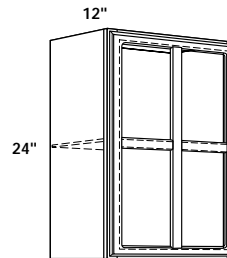


Glass Not Included.

### MULLION DOORS (30", 36" and 42" HIGH)

- MD1530 - (Fits W1530, W3030)
- MD1830 - (Fits W1830, W3630)
- MD2130 - (Fits W2130, W4230)
- MDC2430 - (Fits CW2430, CWS2430)
- MD1536 - (Fits W1536, W3036)
- MD1836 - (Fits W1836, W3636)
- MD2136 - (Fits W2136, W4236)
- MDC2436 - (Fits CW2436, CWS2436)
- MD1542 - (Fits W1542, W3042)
- MD1842 - (Fits W1842, W3642)
- MD2142 - (Fits W2142, W4242)
- MDC2442 - (Fits CW2442, CWS2442)

**NEW**



Glass Not Included.

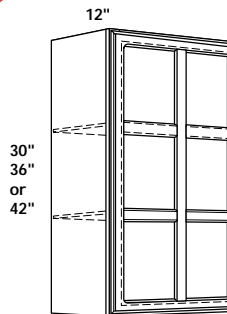
### SINGLE MULLION DOOR WALL CABINETS (24" HIGH)

- MW1524 L or R \*FIMW1524 L or R
- MW1824 L or R \*FIMW1824 L or R

Specify L or R Door Hinge

\*FI denotes finished interior cabinets.

**NEW**



(42" High has 3-shelves)  
Glass Not Included.

### SINGLE MULLION DOOR WALL CABINETS (30", 36" and 42" HIGH)

- MW1530 L or R \*FIMW1530 L or R
- MW1830 L or R \*FIMW1830 L or R
- MW2130 L or R \*FIMW2130 L or R
- MW1536 L or R \*FIMW1536 L or R
- MW1836 L or R \*FIMW1836 L or R
- MW2136 L or R \*FIMW2136 L or R
- MW1542 L or R \*FIMW1542 L or R
- MW1842 L or R \*FIMW1842 L or R
- MW2142 L or R \*FIMW2142 L or R

Specify L or R Door Hinge

\*FI denotes finished interior cabinets.

**SHELVES:** All wall cabinets have adjustable shelves unless specified otherwise.

**HINGES:** All 42" High Wall Cabinet doors have 3 hinges per door.

**GLASS INSTALLATION:** Silicone adhesive recommended for all glass installations in Mullion Doors.

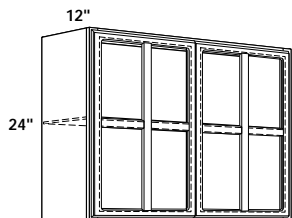
**NOTE:** Mullion door cabinets do not automatically come with finished interiors. For finished interior cabinet, prefix FI to nomenclature.

**One week extended lead time on 36" high mullion doors.**

# MULLION DOOR CABINETS

**NEW**

## DOUBLE MULLION DOOR WALL CABINETS (24" HIGH)



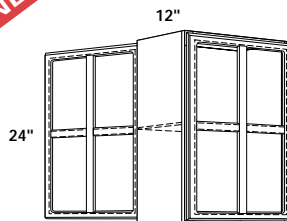
Glass Not Included.

MW3024      \*FIMW3024  
MW3624      \*FIMW3624

\*FI denotes finished interior cabinets.

**NEW**

## SINGLE MULLION DOOR PENINSULA WALL CABINETS (24" HIGH)



Glass Not Included.

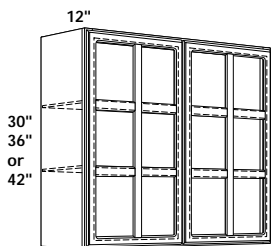
PMW1824 L or R      \*FIPMW1824 L or R

Specify L or R Door Hinge

\*FI denotes finished interior cabinets.

**NEW**

## DOUBLE MULLION DOOR WALL CABINETS (30", 36" and 42" HIGH)



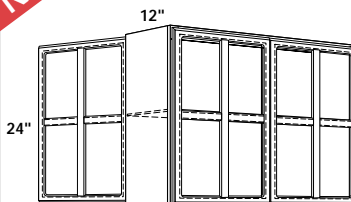
(42" High has 3-shelves)  
Glass Not Included.

MW3030      \*FIMW3030  
MW3630      \*FIMW3630  
MW4230      \*FIMW4230  
MW3036      \*FIMW3036  
MW3636      \*FIMW3636  
MW4236      \*FIMW4236  
MW3042      \*FIMW3042  
MW3642      \*FIMW3642  
MW4242      \*FIMW4242

\*FI denotes finished interior cabinets.

**NEW**

## DOUBLE MULLION DOOR PENINSULA WALL CABINETS (24" HIGH)



Glass Not Included.

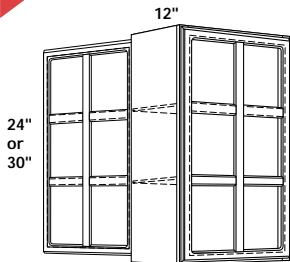
PMW3024      \*FIPMW3024  
PMW3624      \*FIPMW3624

Specify L or R Door Hinge

\*FI denotes finished interior cabinets.

**NEW**

## SINGLE MULLION DOOR PENINSULA WALL CABINETS (30" HIGH)



Glass Not Included.

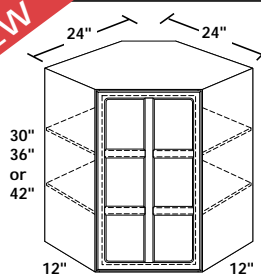
PMW1830 L or R      \*FIPMW1830 L or R  
PMW2130 L or R      \*FIPMW2130 L or R

Specify L or R Door Hinge

\*FI denotes finished interior cabinets.

**NEW**

## SINGLE MULLION DOOR CORNER WALL CABINETS (30", 36" and 42" HIGH)



(42" High has 3-shelves)  
Glass Not Included.

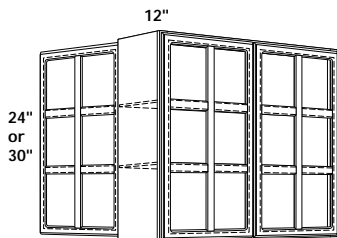
MCW2430 L or R      \*FIMCW2430 L or R  
MCW2436 L or R      \*FIMCW2436 L or R  
MCW2442 L or R      \*FIMCW2442 L or R

Specify L or R Door Hinge

\*FI denotes finished interior cabinets.

**NEW**

## DOUBLE MULLION DOOR PENINSULA WALL CABINETS (30" HIGH)



Glass Not Included.

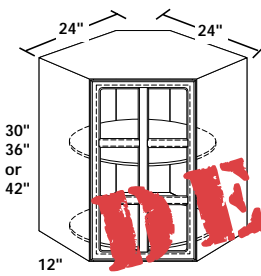
PMW3030      \*FIPMW3030  
PMW3630      \*FIPMW3630  
PMW4230      \*FIPMW4230

Specify L or R Door Hinge

\*FI denotes finished interior cabinets.

**NEW**

## SINGLE MULLION DOOR CORNER WALL CABINETS WITH LAZY SUSAN (30", 36" and 42" HIGH)



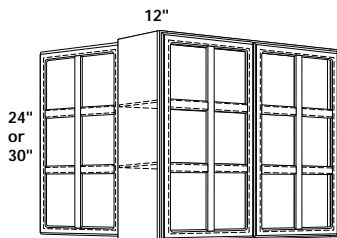
Glass Not Included.

MCW2430 L or R  
MCWS2436 L or R  
MCWS2442 L or R

Specify L or R Door Hinge

**NEW**

## 30" HIGH x 15" DEEP SINGLE MULLION DOOR CORNER WALL CABINETS



(42" High has 3-shelves)      Glass Not Included.

MCW2730 L or R      \*FIMCW2730 L or R  
MCW2736 L or R      \*FIMCW2736 L or R  
MCW2742 L or R      \*FIMCW2742 L or R

Specify L or R Door Hinge

\*FI denotes finished interior cabinets.

**SHELVES:** All wall cabinets have adjustable shelves unless specified otherwise.

**HINGES:** All 42" High Wall Cabinet doors have 3 hinges per door.

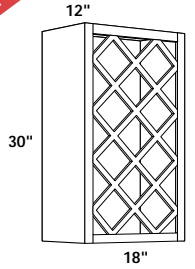
**GLASS INSTALLATION:** Silicone adhesive recommended for all glass installations in Mullion Doors.

**NOTE:** Mullion door cabinets do not automatically come with finished interiors. For finished interior cabinet, prefix FI to nomenclature.

**\*One week extended lead time on 36" high mullion doors.**

# WALL CABINET ACCESSORIES

**NEW**

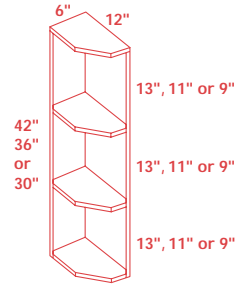


(11 bottle capacity)

## 30" HIGH WINE RACK WALL CABINET

WR1830 (Oak, Maple, Cherry or White Vinyl)  
 \*FIWR1830 (Oak, Maple, or Cherry veneer plywood)

\*FI denotes finished interior cabinets.



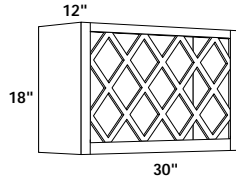
## KNICK KNACK WALL SHELVES

WS42 (Oak, Maple or Cherry)  
 WS36 (Oak, Maple or Cherry)  
 WS30 (Oak, Maple or Cherry)

Shelves are 3/4" thick and cut at a 45° angle to accommodate molding.

(Constructed of wood and wood products that are not necessarily veneer core plywood.)

**NEW**

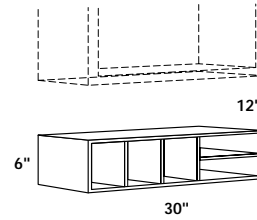


(11 bottle capacity)

## 18" HIGH WINE RACK WALL CABINET

WR3018 (Oak, Maple, Cherry or White Vinyl)  
 \*FIWR3018 (Oak, Maple, or Cherry veneer plywood)

\*FI denotes finished interior cabinets.



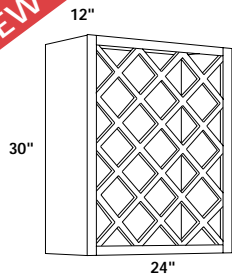
(5 Openings)

## 6" HIGH WALL CABINET ORGANIZER

ORG30 (Oak, Maple or Cherry)

Install below 30" wide wall cabinet.

**NEW**

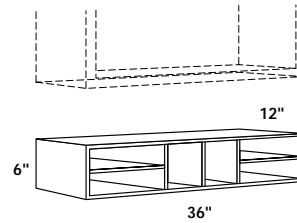


(17 bottle capacity)

## 30" HIGH WINE RACK WALL CABINET

WR2430 (Oak, Maple, Cherry or White Vinyl)  
 \*FIWR2430 (Oak, Maple, or Cherry veneer plywood)

\*FI denotes finished interior cabinets.



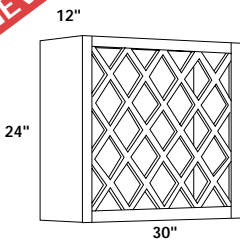
(6 Openings)

## 6" HIGH WALL CABINET ORGANIZER

ORG36 (Oak, Maple or Cherry)

Install below 36" wide wall cabinet.

**NEW**

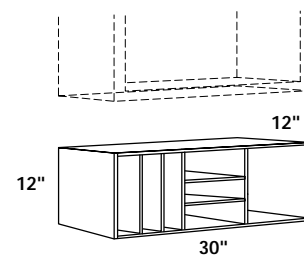


(17 bottle capacity)

## 24" HIGH WINE RACK WALL CABINET

WR3024 (Oak, Maple, Cherry or White Vinyl)  
 \*FIWR3024 (Oak, Maple, or Cherry veneer plywood)

\*FI denotes finished interior cabinets.



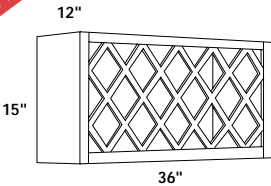
(7 openings)

## 12" HIGH WALL CABINET ORGANIZER

ORG3012 (Oak, Maple or Cherry)

Install below 30" wide wall cabinets.

**NEW**

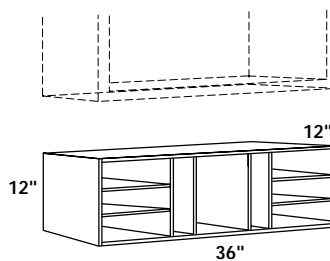


(14 bottle capacity)

## 15" HIGH WINE RACK WALL CABINET

WR3615 (Oak, Maple, Cherry or White Vinyl)  
 \*FIWR3615 (Oak, Maple, or Cherry veneer plywood)

\*FI denotes finished interior cabinets.



(9 openings)

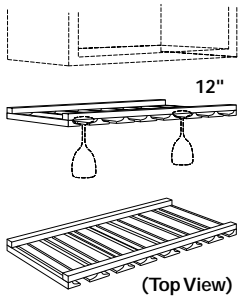
## 12" HIGH WALL CABINET ORGANIZER

ORG3612 (Oak, Maple or Cherry)

Install below 36" wide wall cabinets.

**NOTE:** Wine racks do not automatically come with finished interiors. For finished interior cabinet, prefix FI to nomenclature.

# WALL CABINET ACCESSORIES

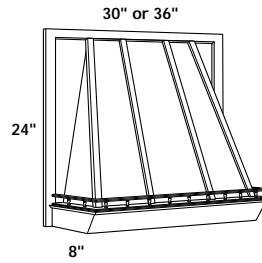


## 36" WIDE STEM GLASS HOLDER

SGH36 (Oak or Maple)

(Trimable widths)

**NOTE:** Mounts beneath 36" wide wall cabinets or smaller.

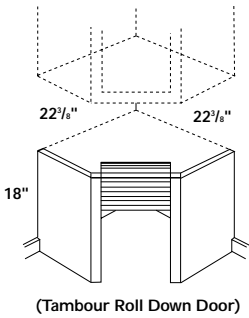


## 30" & 36" WIDE WOOD HOODS

WH30 (Oak, Maple or Cherry)  
WH36 (Oak, Maple or Cherry)

Shipped with White Metal Liner

(Blower Units must be ordered separately.)



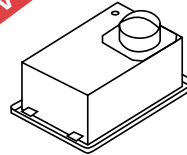
## APPLIANCE GARAGE

AG2418 (Oak, Maple or Cherry)

(Assembly Required)

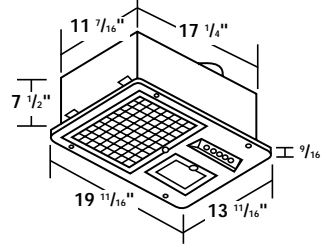
**NOTE:** Install beneath corner wall cabinets. Designed to sit on counter top.

**NEW**

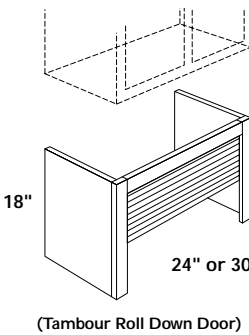


## BLOWER UNITS

BUF01BS (Biscuit)  
BUF01WH (White)  
BUF01BL (Black)  
BUF01SM (Silver Metallic)  
250 CFM Squirrel Cage Motor



BUF02BS (Biscuit)  
BUF02WH (White)  
BUF02BL (Black)  
BUF02SM (Silver Metallic)  
370 CFM Squirrel Cage Motor



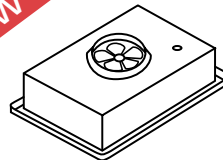
## STRAIGHT APPLIANCE GARAGE CABINETS

SAG2418 (Oak, Maple or Cherry)  
SAG3018 (Oak, Maple or Cherry)

(Assembly Required)

**NOTE:** Install beneath 24" or 30" wide cabinet. Designed to sit on countertop.

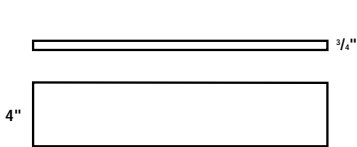
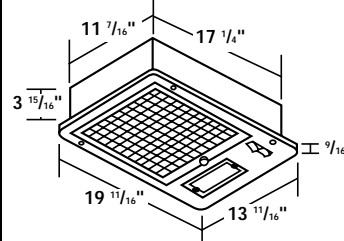
**NEW**



## BLOWER UNITS

BUF04BS (Biscuit)  
BUF04WH (White)  
BUF04BL (Black)  
BUF04SM (Silver Metallic)

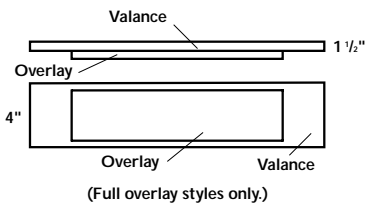
240 CFM Axial Propeller Fan



## STRAIGHT VALANCES

STVAL48  
STVAL60  
STVAL72

(Oak, Maple, Cherry & White Vinyl)  
(Trimable)

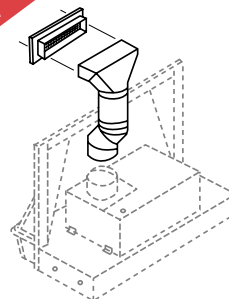


## STRAIGHT VALANCE OVERLAYS

OVAL36 OVAL60  
OVAL42 OVAL66  
OVAL48 OVAL72  
OVAL54

Overlays are 6 1/4" shorter than valance to allow for 3" each end trimmable.

**NEW**



## BLOWER UNIT ACCESSORIES

FDK0001/02

Ductless conversion kit for use with BUF01 or BUF02 models.

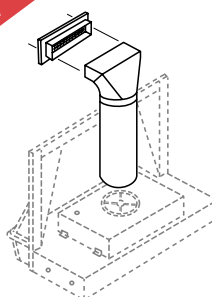


## SCALLOPED VALANCES

SCVAL36 SCVAL60  
SCVAL48 SCVAL72

Standard Reveal Styles  
(Oak, Maple and Cherry)  
(Trimable)

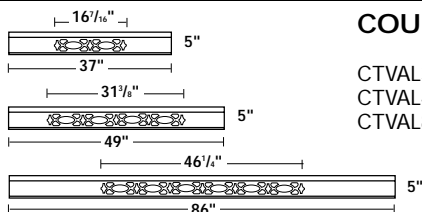
**NEW**



## BLOWER UNIT ACCESSORIES

FDK0004

Ductless conversion kit for use with BUF04 models.



## COUNTRY VALANCES

CTVAL37 (Oak, Maple or Cherry)  
CTVAL49 (Oak, Maple or Cherry)  
CTVAL86 (Oak, Maple or Cherry)